

KINGSTON GRAND

EST. THEATRE 1879

REGINA ROSEN AUDITORIUM

TECHNICAL SPECIFICATIONS



Kingston Grand Theatre
218 Princess Street
Kingston, ON K7L 1B2

Updated: January 2025



Table of Contents

General Information	3
Contacts.....	3
Health & Safety Policy.....	4
Venue Rules and Regulations.....	5
House Staff and Union Affiliation	6
Loading Dock.....	6
Parking.....	7
Shore Power	7
Back of House Access	8
Dressing Rooms, Green Room & Washrooms.....	9
Laundry and Wardrobe Facilities.....	10
Seating Capacity	10
Stage	11
Orchestra Pit & Elevating Stage Extension	12
Piano & Backline.....	12
Orchestra Shell.....	13
Counterweight Fly System	14
Soft Goods.....	14
Lineset Schedule	15
Tour Power	16
Lighting System	16
Lighting Instrument Inventory.....	17
Atmospheric Effects.....	18
House Hang Diagram.....	19
Audio System.....	20
Video & Projection Equipment	21
Communication System	22

General Information



Address

Kingston Grand Theatre
218 Princess St.
Kingston, Ontario
K7L 1B2

www.kingstongrand.ca

Contacts

General	613-546-4465
Box Office	613-530-2050
Fax	613-545-7890

Production Supervisor	Dave Vanderlip	X 1134	dvanderlip@cityofkingston.ca
Production Supervisor	Alex Boxall	X 1147	aboxall@cityofkingston.ca
Production Supervisor	Anne-Marie Mortensen		amortensen@cityofkingston.ca
Operations Supervisor	Keith MacVicar	X 1144	kmacvicar@cityofkingston.ca
Box Office Coordinator	Rebecca Brown	X 1138	rbrown@cityofkingston.ca

Health & Safety Policy

Kingston Grand Theatre is committed to following and promoting industry-related safety guidelines, in accordance the Ontario Occupational Health and Safety Act. It is our expectation that all workers, local or visiting, will comply with all regulations and policies of Kingston Grand Theatre pertaining to Health and Safety.

Per the Occupational Health and Safety Act, any person who performs work or supplies services for monetary compensation is deemed to be a worker and is required by law to comply with the provisions of the Occupational Health and Safety Act and its regulations.

During all load-ins, set-ups, lighting hangs, lighting focus sessions, load-outs and strikes, the following personal protective equipment **must be worn** by any person working in the Regina Rosen Auditorium.

CSA Approved Type I or II Hard Hat

- Section 22 - Construction Regulations (OH&S Act)

CSA Approved Grade I (Green Triangle) Protective Footwear

- Section 23 – Construction Regulations (OH&S Act)

In all other situations where a worker may be exposed to the hazard of a head or foot injury, head or foot protection **must be worn** appropriate in the circumstances.

- Sections 80 and 82 - Industrial Regulations (OH&S Act)

All workers performing work at height must be trained and certified in the province of Ontario and carry proof of such valid certification on their person at all times.

All workers operating Kingston Grand Theatre's scissor lift must be trained and certified in Elevating Work Platforms in the province of Ontario and carry proof of such valid certification on their person at all times.

It is expected that all touring / visiting workers comply with these regulations and supply their own Personal Protective Equipment.

Failure to comply with these rules and regulations may result in an eviction from the stage.

The Occupational Health and Safety Act is available online here:

<https://www.ontario.ca/laws/statute/90o01>

Please contact a Production Supervisor for full policies and procedures pertaining to health and safety or if you have any questions or concerns.

Venue Rules and Regulations

No Smoking

In accordance with the City of Kingston Bylaw (2002-23), smoking is not permitted anywhere on Grand Theatre or public property, or within 9 meters of theatre entrances and exits. This includes any form of e-cigarettes or vaporizers. Any fines incurred will be the responsibility of the client / renter.

Pyrotechnics, Open Flame and Firearms

Any licensee who wants to use pyrotechnics special effects must obtain authorization from a Production Supervisor and a permit from the Fire Chief of the City of Kingston. Details on the type of effects, sequence of firing and a stage layout will be requested. Fees will apply. In addition, the operator will have to hold the proper level of certification from the Explosive Regulatory Division of Natural Resources Canada.

Any licensee who wants to use open flame must obtain authorization from a Production Supervisor and a permit from the Fire Chief of the City. Detailed information on the device will be requested and on-site testing may be required. Fees may apply

Without valid permits and certification, Kingstong Grand Theatre will not authorize the use of any pyrotechnics or flame effects.

All firearms, including replica firearms used at Kingston Grand Theatre must be handled in accordance with Federal legislation.

Atmospheric Effects

The use of any haze, smoke, or fog effects requires the bypass and monitoring of our fire system at the cost of \$31.81 per hour (fee subject to annual increases).

Please advise Production Supervisors in advance if your production requires atmospheric effects to ensure proper staffing is arranged.\

Fire Curtain

The Fire Curtain line must remain clear of obstructions at all times and shall be able to travel freely to the permanent stage deck at all times.

House Staff and Union Affiliation

Technical Staff are members of and operate under the jurisdiction of IATSE Local 471.

Front of House, Box Office and Bar Staff are members of and operate under the jurisdiction of CUPE Local 109.

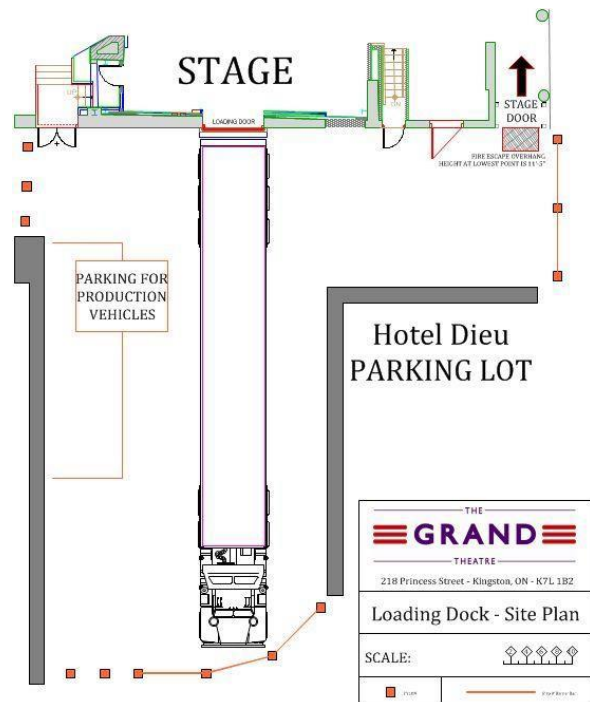
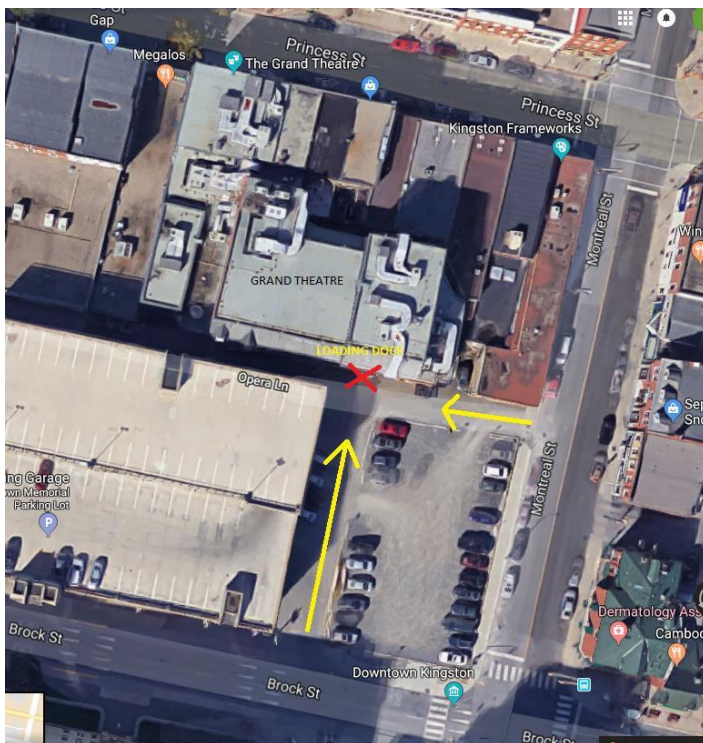
Ushers and merchandise sellers are volunteers.



Loading Dock

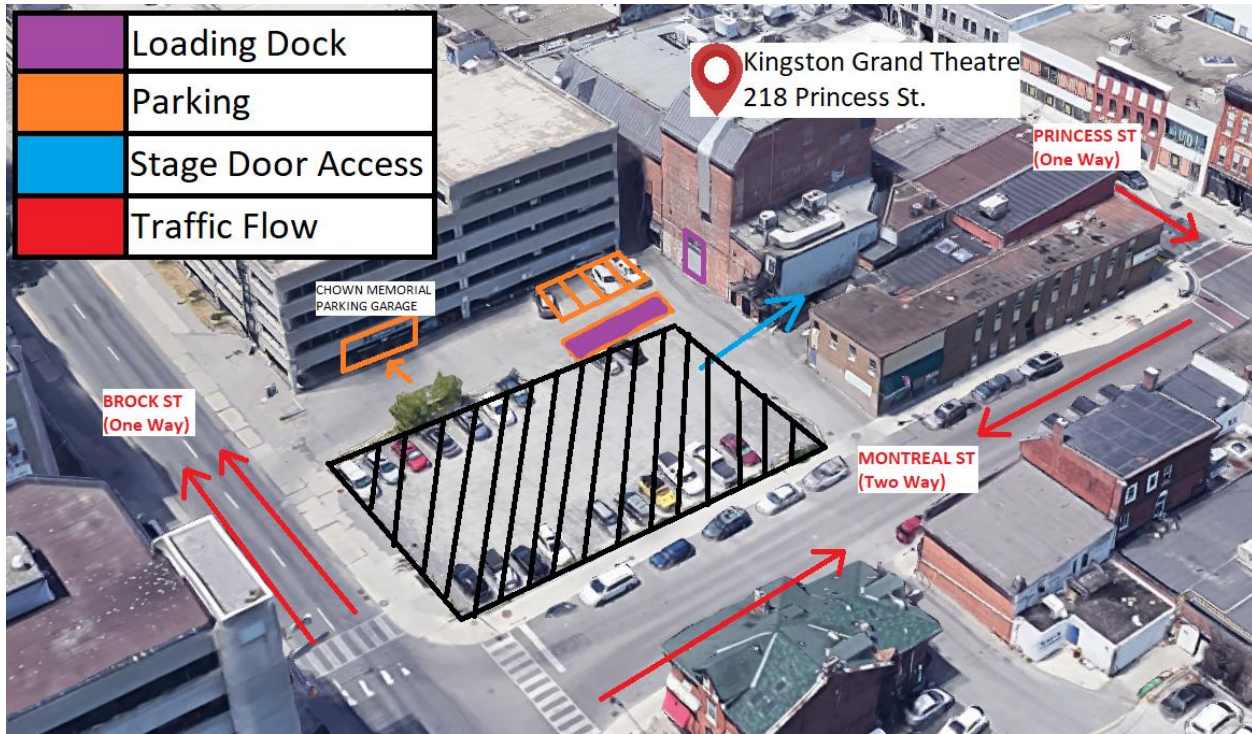
The loading dock is located off Opera Lane and is accessible from Montreal Street or Brock Street. The roll up door opens directly to stage left at deck level. It is necessary for larger trucks to back in from Brock Street. Grand Theatre employees are not permitted to stop or direct traffic on neighboring city streets or guide and assist in the parking of vehicles. Please plan accordingly and have members of your company assist your drivers if necessary. **TRAILERS MAY NOT STAY IN THE DOCK.** We ask that tractor trailers pull 15' from the dock to clear theatre emergency exits

DIMENSIONS	IMPERIAL	METRIC
WIDTH	7'6"	2.29 m
HEIGHT	9'8"	2.94 m
ELEVATION ABOVE GRADE	2'9" (varies slightly due to slope)	0.84 m



Parking

The Kingston Grand Theatre has limited parking available and can accommodate 2 larger vehicles (example – 1 tour bus, 1 truck) or up to 4 smaller vehicles (cars and vans.)



Please advance all parking needs for your event with a Production Supervisor.

Additional parking is available in the adjacent Chown Memorial Parking Garage at 166 Brock St (Height Restriction 6'6")

- \$1.50/hr Monday thru Saturday from 6am-6pm
- \$3.00 Flat Rate Evenings from 6pm-6am & Sunday

Please note that the gravel parking lot at the corner of Brock & Montreal is owned by the hospital, and not part of the Chown Memorial Parking Garage. This lot is a private lot, and you will be ticketed if you park within.

Shore Power

Shore Power is available for one (1) tour bus via a 50Amp umbilical, and can be connected during show load in. **Please note that Shore Power is only available while the facility is crewed and active, and it will be disconnected during the show load out.**

Back of House Access

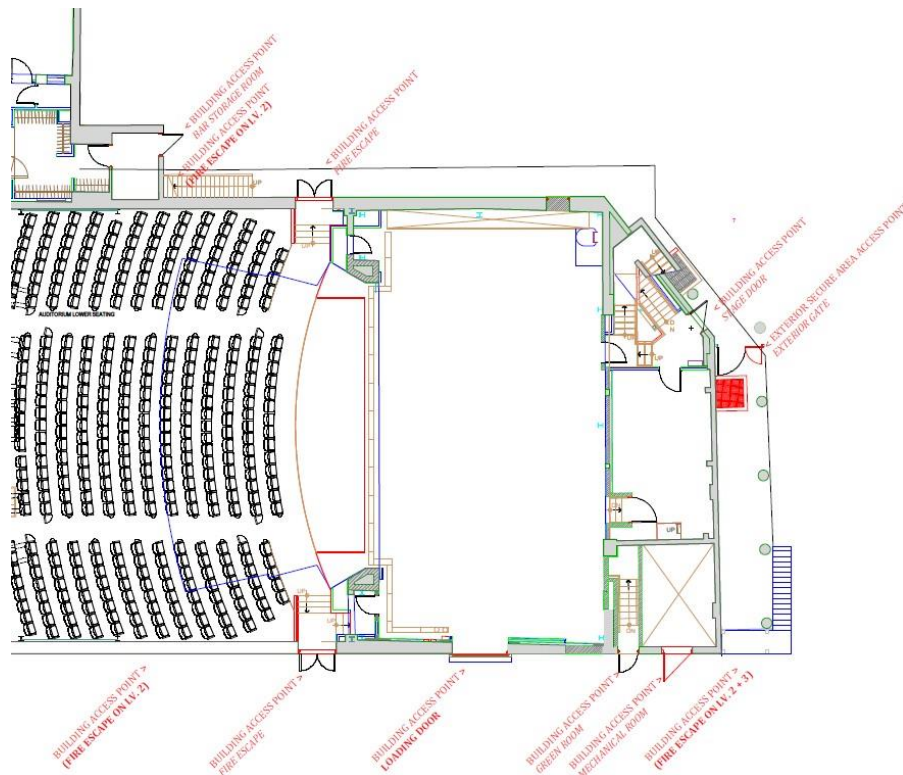
The stage door is located off of an alley at the rear of the theatre from Opera Lane. The stage door provides direct access to a stairwell with access to stage, green room (basement), and 2 floors of dressing rooms. This door is secured by a gate which a Production Supervisor will unlock on the day of your event.

-- An access code will also be provided via email in advance of your event. --

The Back of House and stage areas are not AODA accessible, please notify management in advance if you have anyone who may require assistance.

There is separate access to basement Green Room and laundry facilities from Opera Lane.

Please note: There is no internal route from back of house to front of house without either crossing the stage and auditorium or going outside



Dressing Rooms, Green Room & Washrooms

Three dressing rooms located on the 2nd and 3rd floors, and a green room in the basement level, are all accessed via stairwell.

The following spaces are available:

Dressing Room 1

Small private dressing room for 1-2 people with mirror, makeup light and sink. Door with direct access to washroom and showers (shared with dressing room 2)

Dressing Room 2

Large group dressing room to accommodate up to 30 people. 2 toilet stalls, sinks, shower, chairs, and many mirrors with makeup lights are available. TV with direct stage feed, Clearcom paging station and bar fridge are available.

Dressing Room 3

Large group dressing room to accommodate up to 30 people. 2 toilet stalls, sinks, 2 showers, chairs, and many mirrors with makeup lights are available. TV with direct stage feed, Clearcom paging station and bar fridge are available.

Green Room

The green room is a large space in the basement directly beneath the stage. Featuring a kitchenette with sink, fridge, large counter space, sitting area, and desk. TV with direct stage feed, Clearcom paging station is also available.

Washrooms

Back Stage washrooms are located in the basement and on the second and third floors.



Laundry and Wardrobe Facilities

A washer and dryer are available in laundry area in basement (near green room). Please supply your own detergent and supplies.

The following accessories are generally available:

- Clothing racks
- Professional quality steamer
- Iron & ironing board
- Laundry baskets
- Hangers



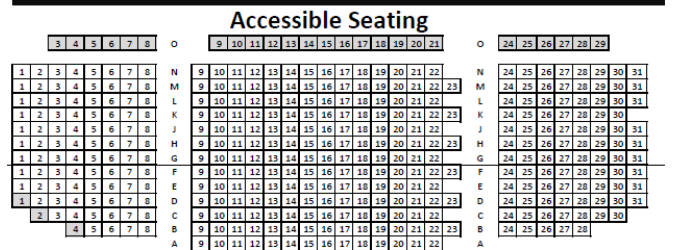
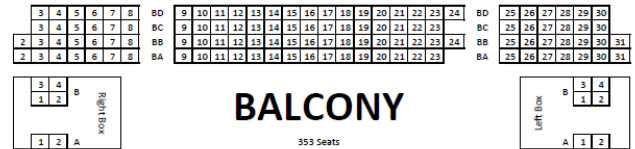
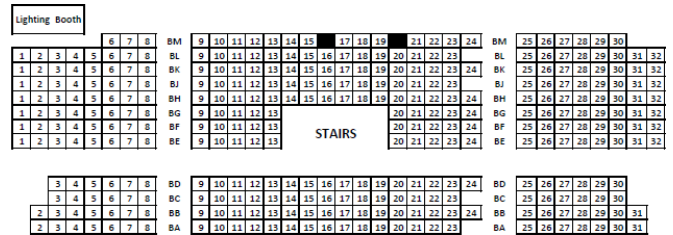
Seating Capacity

Permanent Seats

ORCHESTRA LEVEL	396
BALCONY	341
BOX SEATS	12
SUBTOTAL	749

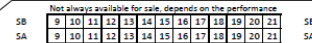
Removable Seating (Rows SA & SB) 26

GRAND TOTAL 775



ORCHESTRA

396 Seats



26 Seats

Stage

Construction

The Regina Rosen stage is a sprung stage constructed of a concrete subfloor, rubber isolation pucks, 2" x 4" sleepers, 2 layers of 3/4" plywood, and a 1/4" Stagelam top. (Standard stage colour is charcoal)

Stage Dimensions

WIDTH	IMPERIAL	METRIC
PROSCENIUM ARCH	40'6"	12.34m
STAGE RIGHT WING (TO ARBOR PIT FENCE)	7'6"	2.29m
STAGE LEFT WING	9'6"	2.9m
TOTAL- STAGE LEFT WALL TO ARBOR PIT FENCE.	57'6"	17.53m

DEPTH		
STAGE LIP TO BACK WALL OF STAGE	33'5"	10.21m
TO CYCLORAMA	30'5"	9.29m
TO ORCHESTRA SHELL WALL	29'9"	9.06m
TO PLASTER LINE	2'3"	.057m
TO FRONT OF FORESTAGE AT CENTRE	9'6"	2.9m
TO FRONT OF FORESTAGE AT SIDES	6'10"	2.1m
TOTAL DEPTH-FRONT OF FORESTAGE (CTR) TO BACK WALL	42'11"	13.38m
-FRONT OF FORESTAGE TO CYCLORAMA	39'11"	12.16m
-FRONT OF FORESTAGE TO ORCH SHELL WALL	39'3"	11.96m
STAGE LIP FORWARD TO BALCONY RAIL	30'4"	9.24m
TO FIRST FOH LIGHTING PIPE	43'0"	13.1m
TO SECOND FOH LIGHTING PIPE	57'0"	17.37m
TO BACK WALL AUD (ORCH LEVEL)	54'0"	16.46m
TO BACK WALL AUD (BALCONY LEVEL)	73'0"	21.95m

HEIGHT		
PROSCENIUM ARCH	22'0"	6.7m
TO GRID	49'3"	15.01m
TO FLY FLOOR (STAGE RIGHT)	23'2"	7.04m
TO LOADING GALLERY (STAGE RIGHT)	43'1"	13.11m
ABOVE FIRST ROW OF SEATS	3'6"	1.07m
ABOVE ORCHESTRA PIT FLOOR	8'6"	2.59m

Stage Accessories

- 5 x Rolls reversible black / light grey Harlequin vinyl dance floor with cart (Installation of Dance floor typically requires cost of 3 rolls of floor tape, this is charged at \$50/roll + 10% (fees subject to change with material costs))
- 8 x 4' x 8' Staging Concepts Risers
- 4 x 4' x 4' Staging Concepts Risers
- 48 x 8" Riser Legs
- 32 x 16" Riser Legs
- 32 x 24" Riser Legs
- Black Skirting, Guard Rails, Chair stops
- 4 x 29" black stools
- 2 x Lectern

Orchestra Pit & Elevating Stage Extension

An orchestra pit is available as required. Access to the orchestra pit is via stage left and stage right at the basement level.

The stage is equipped with an elevating Gala Systems Spiralift stage extension or "pit lift". This extension is fully automated and can be used to increase space on stage, seating space at audience level (rows SA & SB) or used as an orchestra pit.

Orchestra Pit Dimensions

WIDTH	36'	10.97
FRONT TO BACK (at centre)	18'6"	5.64
DEPTH BELOW STAGE	8'6"	2.59
DEPTH BELOW FIRST ROW OF SEATS	5'0"	1.52
OVERHEAD CLEARANCE UNDER LIP	7'0"	2.13

Stage Extension Dimensions

WIDTH	36'6" (10.97 m)
DEPTH AT CENTRE STAGE	9'6" (2.89m)
DEPTH STAGE LEFT AND RIGHT	6'10" (2.1 m)

A safety net is provided for protection of stage performers and musicians while the orchestra pit is in use.

Orchestra Pit Accessories

- 10 x Wenger music stands
- 10 x Stand lights
- 20 x Wenger musicians chairs, black, padded, no arms

Piano & Backline

Kingston Grand Theatre employs a 9' Steinway D9 concert grand piano. Rental fees are charged for the use of the piano. If concert tuning is required, please give advance notice to a Production Supervisor to ensure tuning is booked. Tuning fees (typically \$140.00 +HST) are charged at **cost plus 10%** to the renter.

Other Items (also subject to fee for use):

Item	Brand	Model	Size
Drum Kit	Yamaha	Custom Birch	18" & 20" kick, 14" snare, 10" 12" 13" 14" toms.
Bass Amplifier	Gallien Krueger	1001-II	700w + 50w (horn)
Bass Cabinet	Ampeg	Heritage	4 x 10" w/ horn

Orchestra Shell

Kingston Grand Theatre is equipped with an acoustical orchestra shell consisting of:

3 ceiling panels- Adjustable angle, acoustically reflective surface, built-in concert lighting fixtures

Back wall- Permanently hung on counterweight pipe 40

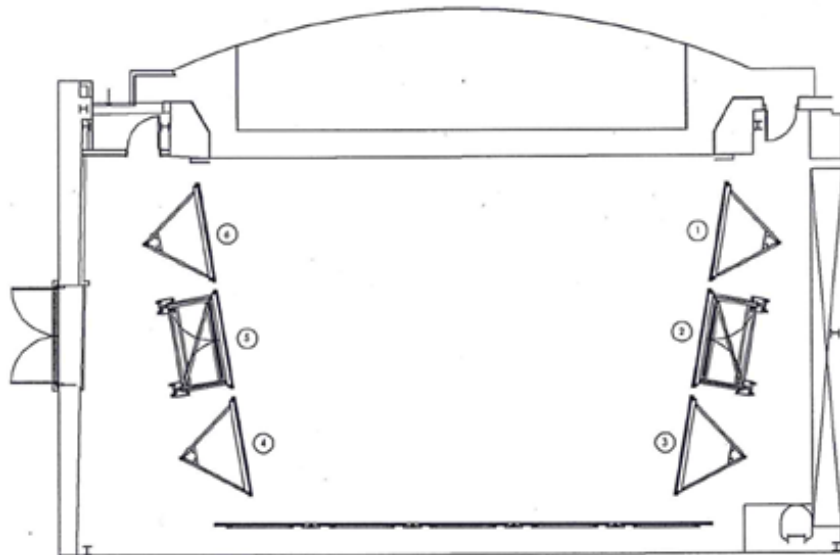
6 Rolling sidewall towers- Stored on motorized pipe 42

Performance area with shell in standard position:

Measured from plaster line: Width 40'6" x Depth 27'8"

Measured from front of forestage at centre stage: Width 40' x Depth 39'8"

A hard surface acoustic reflector hangs in front of and above the proscenium.



TOP VIEW OF TYPICAL PLACEMENT OF BACK WALL AND TOWER SECTIONS



Counterweight Fly System

Kingston Grand Theatre is a single purchase, counterweight fly house and comes equipped with a house hang of soft goods and lights as specified on the lineset schedule below.

If you require the fly system to be stripped or pre-hung you must make prior arrangements with a Production Supervisor. The client is responsible for all associated costs with the altering and the restoring of the house hang, within the rental period.

There are 2 motorized linesets dedicated to orchestra pit truss, and orchestra shell tower storage.

General Information

Lineset Spacing – 8”

Batten Length – 46’

Manual Linesets - 33

Safe Working Load: 25lb / lineal foot

Safe Working Load – Electrics: 30lbs / lineal foot

Load Limit - Lineset: 1150lbs

Load Limit – Electrics: 1380lbs

8’ Arbor Capacity – 60 half bricks

10’ Arbor Capacity – 73 half bricks

Soft Goods

QTY	ITEM	HEIGHT	WIDTH	FULLNESS	COLOUR	STANDARD LOCATION
1	HOUSE CURTAIN	25'0"	24'6"	50%	BLUE	LINE 1 (Guillotine or Traveler)
2	TRAVELERS	24'0"	24'6"	50%	BLACK	LINES 18, 38
4 SETS	LEGS	24'0"	9'0"	0%	BLACK	LINES 6, 13, 17, 33
4	BORDERS	12'0"	46'0"	0%	BLACK	LINES 2,12,24,32
2	CYCLORAMA	24'0"	44'0"	0%	WHITE	1 at LINE 41 1 at LINE 3
2	SCRIM	22'0"	44'0"	0%	BLACK	NOT HUNG

PIPE & DRAPE – 4 x 10’ x 12’ Black FR Panels, 4 x uprights, 4 x cross braces, 4 x base

All soft goods were tested and passed flame testing as of 2022

IMPORTANT

Any soft goods provided by the renter / visiting company (backdrops, scenic elements, etc) must show proof of valid flame testing and treatment before being installed in the regina rosen auditorium.

Grand Theatre staff reserve the right to refuse the installation of any soft goods they deem to be unsafe.

Lineset Schedule

DISTANCE FROM PLASTER LINE	SET	DESCRIPTION	NOTE
2'0" Downstage of PL		LIGHTING/AUDIO TRUSS	MOTORIZED- HI TRIM- 22'6" LOAD LIMIT 1750 LBS
0'3" Upstage of PL		<i>FIRE CURTAIN</i>	
1'0"	1	HOUSE CURTAIN	
1'8"	2	BORDER 1	
2'4"	3	FREE PIPE	
3'0"	4	ELECTRIC 1	
3'8"	5	XX	
4'4"	6	LEG	
5'0"	7	ORCHESTRA SHELL	
5'8"	XX	OBSTRUCTED	
6'4"	9	FREE PIPE	
7'0"	10	XX	
7'8"	11	FREE PIPE	
8'4"	12	BORDER 2	
9'0"	13	LEG 2	
9'8"	14	ELECTRIC 2	
10'4"	15	XX	
11'0"	16	FREE PIPE	
11'8"	17	XX	
12'4"	18	MID STAGE TRAVELER	
13'0"	19	FREE PIPE	
13'11"	20	ORCHESTRA SHELL	
14'4"	XX	OBSTRUCTED	
15'0"	XX	OBSTRUCTED	
15'8"	23	BORDER 3	
16'4"	24	MID STAGE CYCLORAMA	
17'0"	25	LEG 3	
17'8"	26	ELECTRIC 3	
18'4"	27	XX	
19'0"	28	FREE PIPE	
19'8"	29	OBSTRUCTED	
20'4"	30	LX STORAGE	STORAGE ONLY
21'0"	31	BORDER 4	
21'8"	32	LEG 4	
22'4"	33	FREE PIPE	
23'0"	34	ORCHESTRA SHELL	
23'8"	XX	OBSTRUCTED	
24'4"	36	ELECTRIC 4	
25'0"	37	XX	
25'8"	38	FREE PIPE	
26'4"	39	UPSTAGE TRAVELER	
27'8"	40	ORCH SHELL WALL	NOT REMOVABLE
28'4"	41	UPSTAGE CYCLORAMA	
	42	SHELL TOWER STORAGE	MOTORIZED

Tour Power

1 x 400A 3 phase, 5 wire, 208V with Cam-Loks –located upstage right.

1 x 100A 3 phase, 5 wire, 208V with Cam-Loks –located downstage left.

NO FEEDER CABLE AVAILABLE ON SITE

Lighting System

Control: ETC Ion XE with iPad Remote

Booth: Back of balcony (house right)

Circuits: Dimmer per circuit system with 218 20-amp twist lock receptacles.
Please see circuit layout table for detailed information.

Dimmers: 232 x 2.4 KW ETC Sensor Dimmers

Non Dims: 6

Alternate control: ETCNet allows console to be operated from stage left, stage right, house mix position.

ETC Unison System: Touchpad can be located stage left, stage right, mix position to allow house light control and basic lighting setups for lectures, concerts, etc.

Lighting Network: sACN patch points located throughout theatre. Input / Output nodes avail.

Work lights: Located on FOH Catwalk 2 and all House Electrics. Control is located throughout performance area.

Mounting Positions:

FOH 1- Near catwalk

FOH 2 - Far catwalk

Box Booms left and right

Forestage pit truss

Onstage pipes 4/14/26/36

Circuit Layout

CIRCUIT #	QUANTITY	LOCATION	NOTES
1-18	18	SECOND FOH CATWALK (FAR)	PIG TAILS, EVENLY DISTRIBUTED ALONG RAIL
19-44	26	FIRST FOH CATWALK (NEAR)	PIG TAILS, EVENLY DISTRIBUTED ALONG RAIL
45-56	12	STAGE LEFT BOX BOOM	SOCAPEX FROM CATWALK
57-68	12	STAGE RIGHT BOX BOOM	SOCAPEX FROM CATWALK
69-86	18	FORESTAGE TRUSS	SOCAPEX FROM CATWALK
93-94	2	BOX SEAT STAGE LEFT	TWO GANG BOX
95-96	2	BOX SEAT STAGE RIGHT	TWO GANG BOX
97-100	4	ORCHESTRA PIT	FOUR GANG BOX
101-122	24	FIRST ELECTRIC	PIG TAILS EVENLY DISTRIBUTED
127-150	24	SECOND ELECTRIC	SOCAPEX FROM GRID
151-162	12	STAGE LEFT	SOCAPEX FROM GRID
163-180	18	THIRD ELECTRIC	SOCAPEX FROM GRID
181-192	12	FOURTH ELECTRIC	SOCAPEX FROM GRID
193-204	12	STAGE RIGHT	SOCAPEX FROM PINRAIL
205-207	3	STAGE LEFT PROSCENIUM WALL	3 GANG BOX
208-215	8	UPSTAGE CENTRE (Back Wall)	8 GANG BOX
216-218	3	STAGE RIGHT PROSCENIUM WALL	3 GANG BOX
219-226	8	WORK LIGHTS AND MISC.	
227	1	ORCHESTRA PIT OVERHEADS	
228-240	13	HOUSE LIGHTS	

House Lights and Auxiliary Circuits

227	ORCHESTRA PIT OVERHEADS	251	WORKLIGHT RECEPTACLE GRID NO 3
228	UNDER BALCONY	252	WORKLIGHT RECEPTACLE GRID NO 2
229	UNDER BALCONY	253	WORKLIGHT RECEPTACLE GRID NO 1
230	AISLE LIGHTS	254	WORKLIGHT RECEPTACLE GRID NO 4
231	LED's	255	FLY FLOOR WHITE
232	HANGING POTS #1 RIGHT	256	FLY FLOOR BLUE
233	HANGING POTS #1 LEFT	257	UNUSED
234	HANGING POTS #2 RIGHT	258	GRID LIGHTS
235	HANGING POTS #2 LEFT	259	UNUSED
236	HANGING POTS #4 (part) & BALCONY CEILING	260-264	UNUSED
237	HANGING POTS #3	265	PIT VESTIBULE-FLOOR S/L
238	HANGING POTS 4&5 & BALCONY CEILING	266	WORK LIGHT 219 OVERRIDE
239	WALL PANEL HIGHLIGHTS	267	PIT VESTIBULE FLOOR S/R
240	TRUSS ACCENT LIGHTS	268	WORKLIGHT 220 OVERRIDE
		269	FOH CATWALK
241	FOH CATWALK	270	WORKLIGHT 221 OVERRIDE
242	RECEPTACLE U/R (Rt Half)	271	Unused
243	RECEPTACLE U/R (Lt Half)	272	WORKLIGHT 222 OVERRIDE
244	ORCHESTRA PIT QUAD 2&4		
245	ORCHESTRA PIT QUAD 3&11		
246	QUAD RECEPT STAGE ULC		
247	QUAD RECEPT STAGE UL&URC		
248	WORK LIGHT RECEPTACLE		
249	WORK LIGHT RECEPTACLE		
250	WORK LIGHT RECEPTACLE		

Lighting Instrument Inventory

QTY	INSTRUMENT	BRAND	LAMP	NOTES
24	SOURCE FOUR ZOOM (15-30°)	ETC	750W HPL	<i>FOH Permanent</i>
56	SOURCE FOUR	ETC	575W HPL	<i>STAGE AND SPARE</i>
8	SOURCE FOUR	ETC	575W HPL	Permanently hung- box booms
22	6" FRESNELS	STRAND (x18) COLORTAN (x4)	1 KW BTR 500W BTL	<i>STAGE AND SPARE</i>
38	SOURCE 4 PARS	ETC	575W HPL	<i>STAGE AND SPARE</i>
6	ColourSource CYC	ETC	133W LED	LX4 Overhead
16	Colorsource LED PAR	ETC	90W LED	4 on Pit Pipe 4 on LX1 4 on LX2 4 on LX3
12	Fuze SFX LED Moving Light	Elation	300W LED	2 on Pit Pipe 2 on Coves 4 on LX2 4 on LX3
2	Followspot - 1500 FF MSR	CantoUSA	1500w MSR Gold FastFit	BACK OF BALCONY

ADDITIONAL NOTES:

- SOURCE 4 LENS BARRELS AVAILABLE in 19°, 26°, 36°, and 50° (please call to confirm current inventory)
- STANDARD LENSING- W (VN,N,M are available for all 38 Pars)
- STANDARD Coloursource PAR Diffusion – M (W also available)
- SKYJACK 3219 DC powered Scissor lift available on site

ACCESSORIES

- 8 - Booms (10-12' high)
- 10 – Source 4 Iris
- 23 - 6" Barn doors
- Gobo holders for Source Fours
- Approx. 800 ft 12/3 TLG cable (5', 10', 25' lengths)
- Twofers
- Adaptors Male TLG to female U ground
- 4 ETC DMX Output Nodes
- 2 Chroma-Q 4Play Active DMX Splitters
- Ultratec Radiance Hazer (water based fluid)
- Antari HZ-1000 Hazer (oil based fluid)

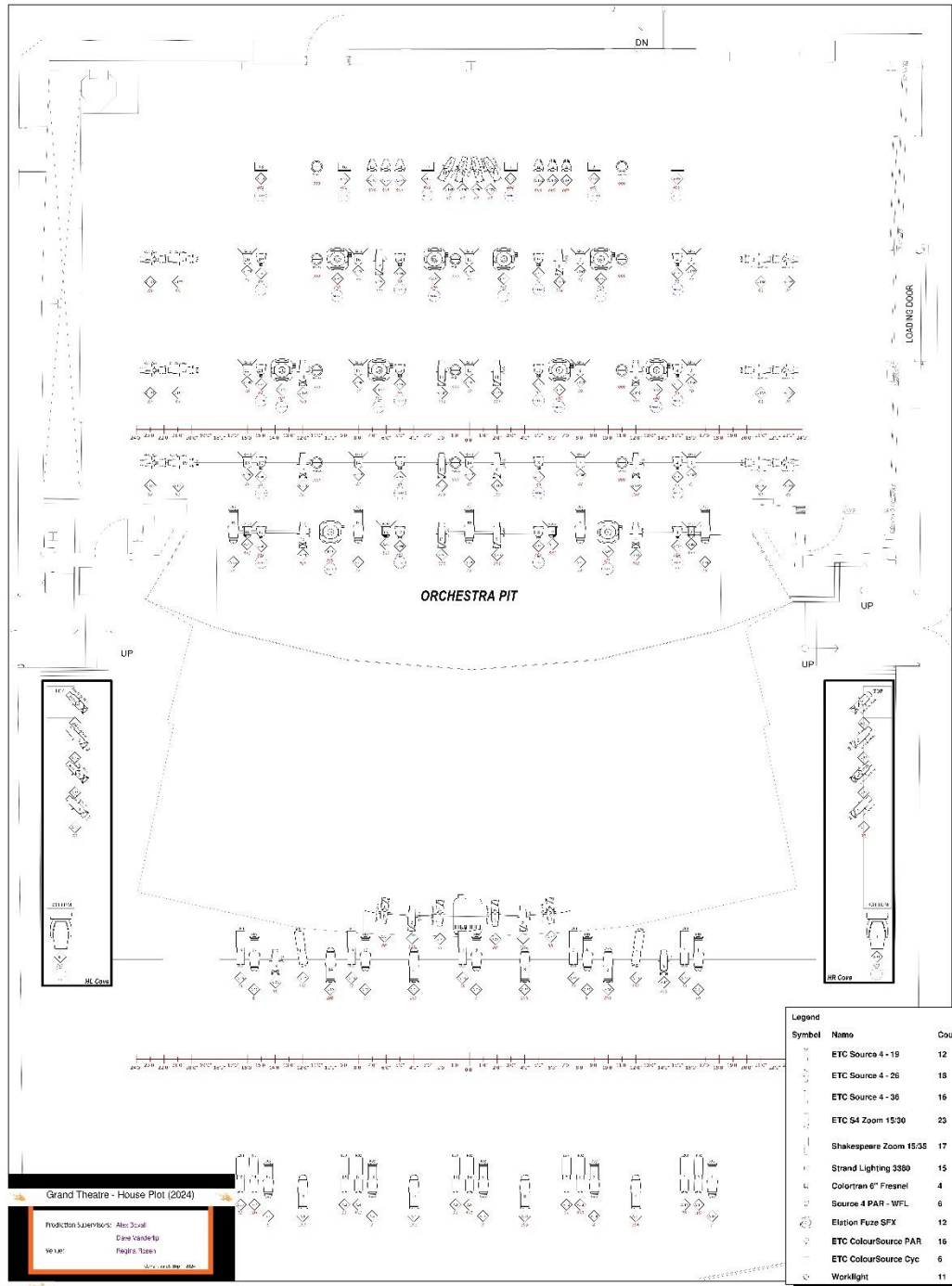
Atmospheric Effects

The use of any haze, smoke, or fog effects requires the bypass and monitoring of our fire system at the cost of \$32.79 per hour (fee subject to annual increases). Please inform a Production Supervisor two weeks in advance if your production requires atmospheric effects to ensure proper staffing is arranged.

House Hang Diagram

A standard house lighting hang is included in the rental of the Regina Rosen Auditorium. Any changes or alterations to this lighting hang must be made and restored during the rental period.

Any labour costs associated with the restore of the house hang are the responsibility of the lessee.



***This drafting is not to scale in this information package. House hang is subject to change without notice. A scale .pdf file for download of this diagram is available at: kingstongrand.ca/about/venues.**

Questions about this drafting, or for alternate formats please contact a Production Supervisor.

Audio System

The Regina Rosen Auditorium is equipped with a high-quality sound system. **There are costs associated with the usage of this system. Please contact a Production Supervisor for a cost estimate for your event.**

Audio Equipment Inventory

Consoles and Processing		
Quantity	Description	Location
1	Digico SD12 w/ D2 Rack & Waves Sound Grid	FOH
1	Digico SD9 Stealth Core 2 (V987) w/ 2 x D-Rack & iPad	Monitors (SL)
1	Meyer Sound Galileo Galaxy 816 Processor	Stage Left
2	Drawmer 1960 Stereo Tube Compressors	FOH
1	Apogee Big Ben Word Clock	FOH
1	A.R.T. Cleanbox II	Moveable
1	Denon DN-D4500 Double CD Player	Storage – Please Advise if Required
Speaker Cabinets		
8	Meyer CQ-1 Active Speaker	4- Centre Cluster 2- House left (upper & lower) 2- House right (upper & lower)
2	Meyer HP700 Active Subs	Ceiling mount at proscenium
2	Meyer HP600 Active Subs	Moveable
4	Meyer 4-XP Front-fill speakers	Stage Lip/Moveable
9	Meyer UPM-2P Under balcony fill speakers	7- Under Balcony Lip
10	EAW MW12 Micro wedge monitors	Moveable
Amplifiers		
4	QSC RMX4050HD	In monitor rack SL
1	QSC RMX4050A	In monitor rack SL
Microphones and Direct Boxes		
4	Shure ULX wireless mic systems with ULX belt-packs	
2	Shure ULX-D4 wireless systems with ULX-D1 belt-packs	
3	Countryman B3 Lavalier mics	
4	Shure MX153 over-ear Mic	
4	Shure Beta 87A (wireless)	
6	Shure Beta 58A	
1	Shure SM58S	
2	Shure Beta 57A	
3	Shure SM57	
1	Shure Beta 91	
2	Shure Beta 52A	
2	Shure SM81	
6	Shure Beta 98	
2	Sennheiser e906	
1	Sennheiser 421	
2	A.K.G. C-430	
2	A.K.G. C-414 xls	
2	DPA d:vote 4099 Instrument Mics (with clips for grand piano, acoustic guitar, violin)	
3	Shure MX202B/C (hanging choir mics)	
3	Crown PCC160 floor mics	
2	Radial JDI passive direct box	
2	Whirlwind EDB1 passive direct boxes	
4	B.S.S. AR133 active direct boxes	
Microphone Stands		
6	Round base straight stands	
9	K&M tall boom stands	
13	K&M short boom stands	
4	Table top mic stands	

Audio Patch Points

XLR connection points are located as follows:

Location	No. Mic Lines	No. Tie Lines	No. Speaker Lines	No. video Lines	Technical power
Downstage right	12	4	2	2	Yes
Downstage left	12	4	2	2	Yes
Upstage right	4	4	2	2	Yes
Upstage left	4	4	2	2	Yes
Orchestra Pit	12	8	4	2	Yes
Green Room	xx	4	2	2	
Stage Hub	xx	67	36		Yes
Mix Position		12	2	2	Yes
Balcony Rail	2	2	2	2	Yes
FOH Service catwalk (1)	6	5	12	6	Yes
FOH Mid Catwalk (2)	2	2	1		Yes
FOH Far Catwalk (3)	2	2	1	2	Yes
Lighting Booth Interface Box	xx	2 to FOH 4 to STAGE	2	2 to FOH 2 to STAGE	Yes

Data: 4 x Cat5e with Ethercon connections run from FOH to downstage left wall.

Cable Pass- Two eight inch pass-throughs located beside the loading door allows cables to pass exterior.

FOH Mix Position is located at back of house stage left of centre.

Monitor Mix Position is located downstage left.

Video & Projection Equipment

Quantity	Description	Location
1	Christie 4k22-HS (22,500 Lumen, 4K UHD) DLP Projector	Balcony Rail
1	Christie 1.2-1.50:1 Zoom Lens	
1	Roland V4-EX Video Mixer	Moveable
1	Draper 10.5' x 14' (4:3 ratio) Screen Kit Front or rear screen available as required.	
1	IFR Velour Dress Kit	

Video connection points are located throughout auditorium, dressing rooms, greenroom, and lobbies.

Program Video Equipment Inventory

- 1 Panasonic WV-CP504 Camera (Permanently fixed to Balcony rail)
- 6 Dynex 21" monitors (Located throughout backstage)
- 2 x 32" Dynex monitors (Located in lobby)

Communication System

The house is equipped with Clearcom stations located:
Downstage left and right Upstage Left and Right Orchestra Pit
Green Room Mix Position Balcony Rail Lighting Booth
Two spotlight positions Fly floor
Loading Gallery Service Catwalk
Lighting catwalks one and two

Headsets - 13
Wired Beltpacks - 10
Wireless Beltpacks - 3

Program sound and paging is available from SR to:
Green Room
Dressing Rooms

FM hearing assist system is available.